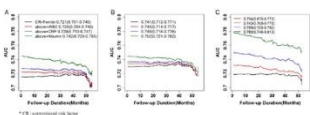


Model 1: CR+Ferritin	0.066	0.169	0.00 2	0.18 9	0.025	0.687	0.00 0	0.448	0.03 8	0.551	0.000	0.999
Model 2: above+WBC	0.074	0.032	0.00 9	0.00 0	0.042	0.351	0.00 3	0.070	0.08 5	0.139	0.007	0.010
Model 3: above+CRP	0.139	0.008	0.00 8	0.00 4	0.138	0.080	0.00 4	0.064	0.21 2	0.000	0.012	0.000
Model 4: above+albumin	0.164	0.000	0.02 6	0.00 0	0.152	0.050	0.00 5	0.092	0.23 4	0.000	0.036	0.000

* CR: conventional risk factor, NRI: net reclassification index, IDI: integrated discrimination improvement.

Figures:

Figure 1. Time-dependent ROC curve analysis of multiple biomarker models for all cases (N=1,000) and infection related mortality (N=100).



Keywords: conventional risk factors, inflammatory markers, mortality, predictive power